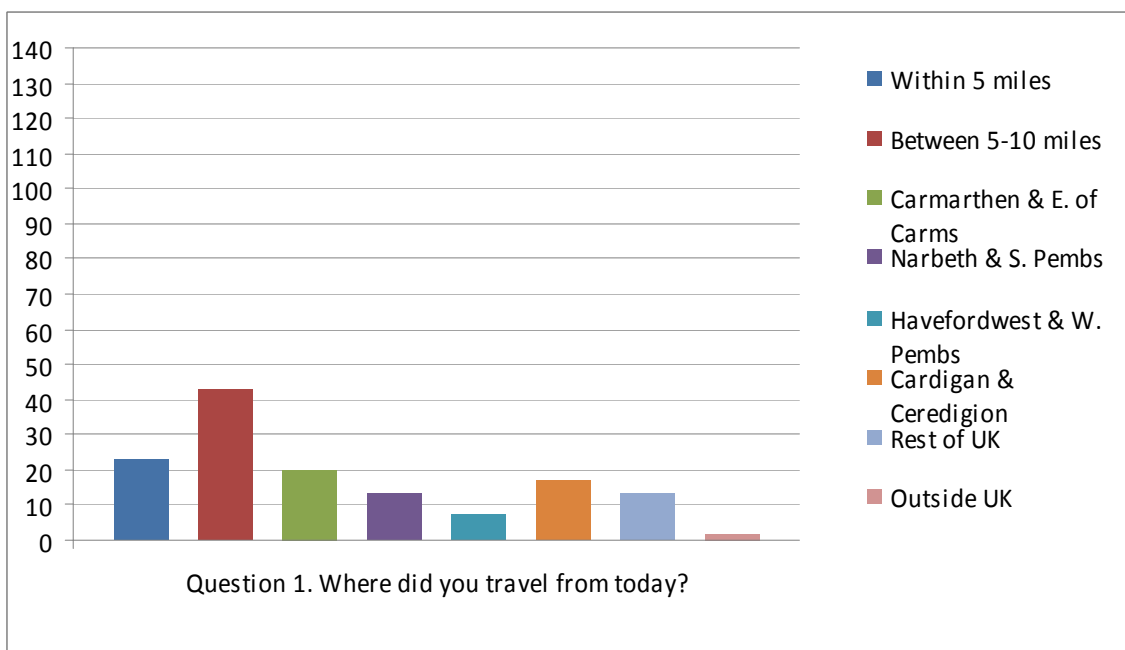
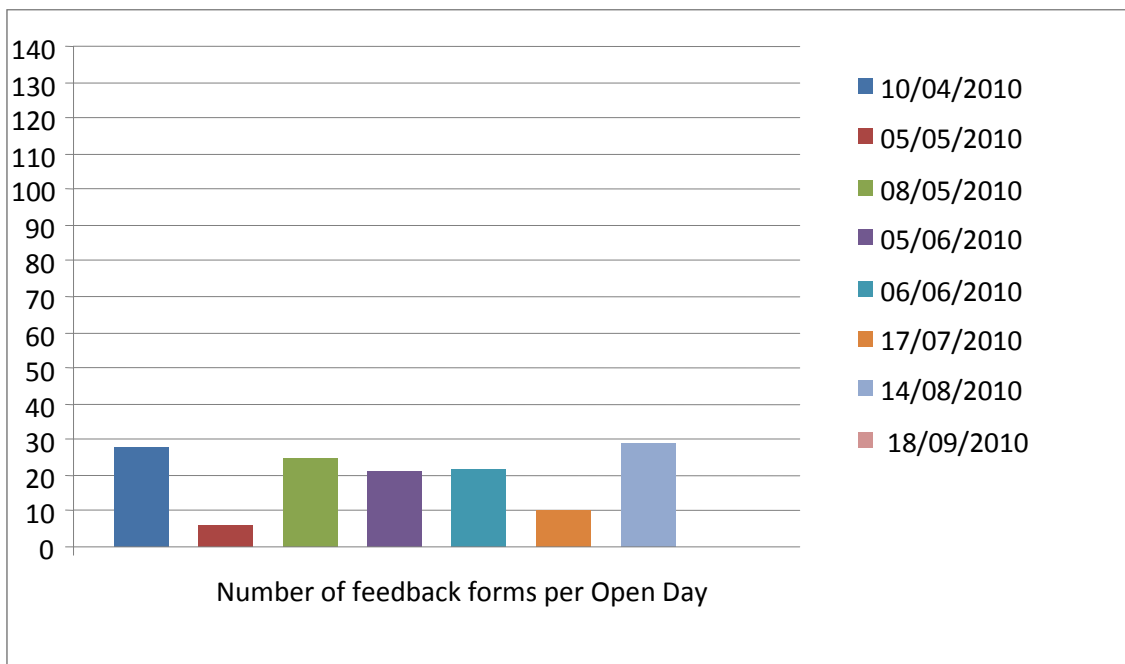




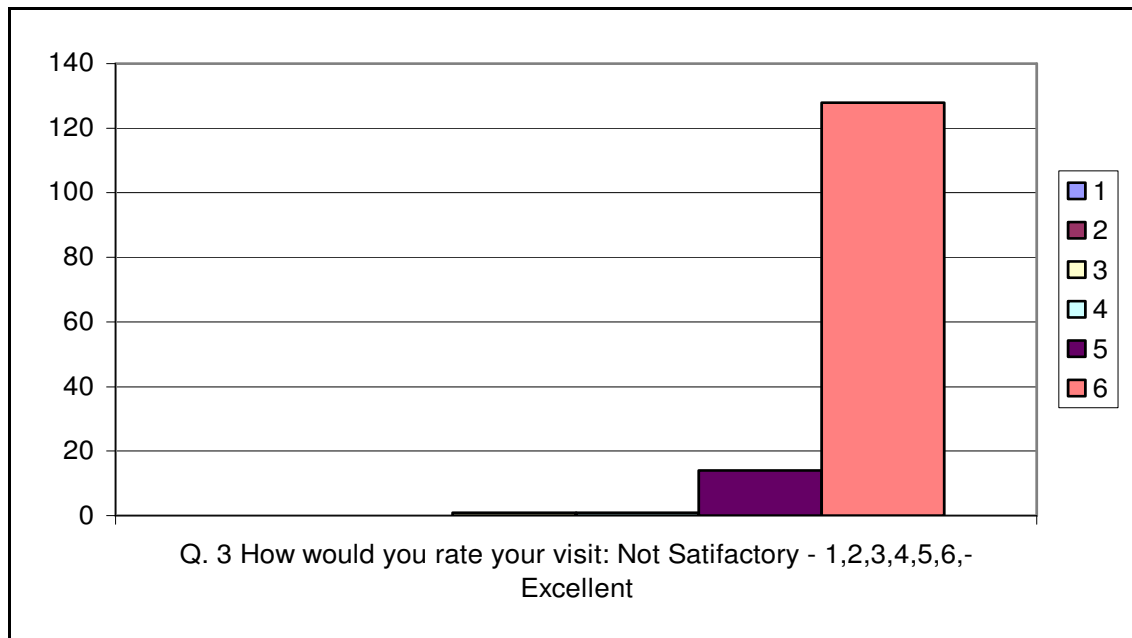
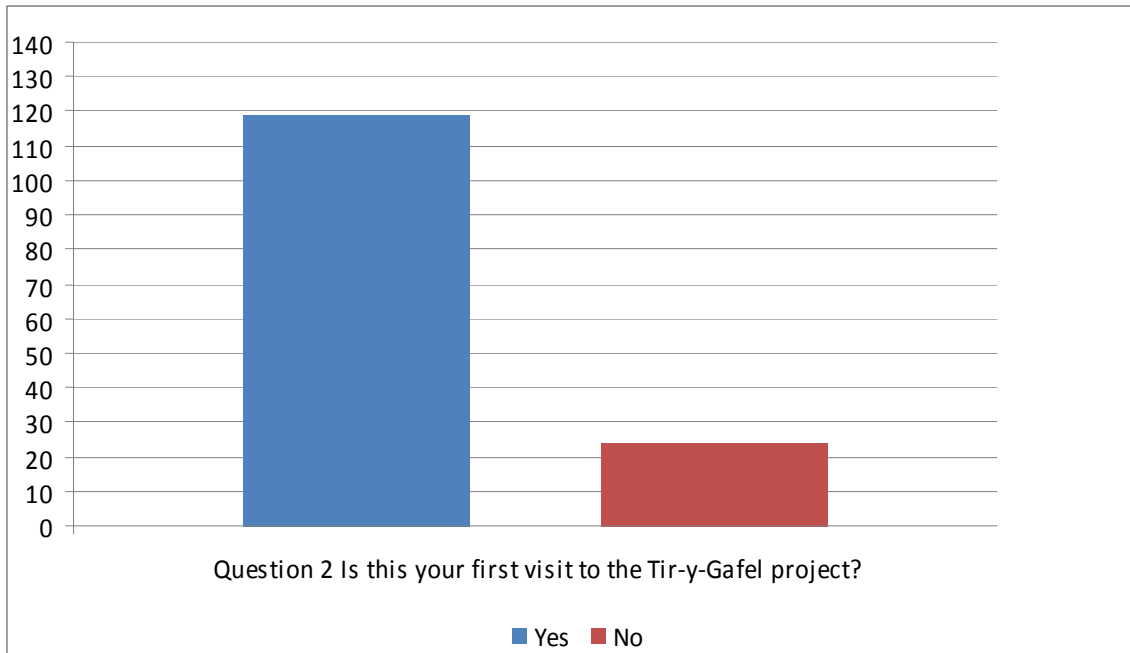
## Lammas Open Days Feedback forms 2010

*This document presents feedback from visitors to the Lammas Tir y Gafel ecovillage project during 2010. Approximately 1100 visitors were taken on guided tours of the ecovillage on 9 open days during this period and feedback forms were distributed at all but the last open day (October 2<sup>nd</sup>; on which a community feedback meeting was held). The bilingual feedback forms asked visitors 8 questions and the responses are collated below.*



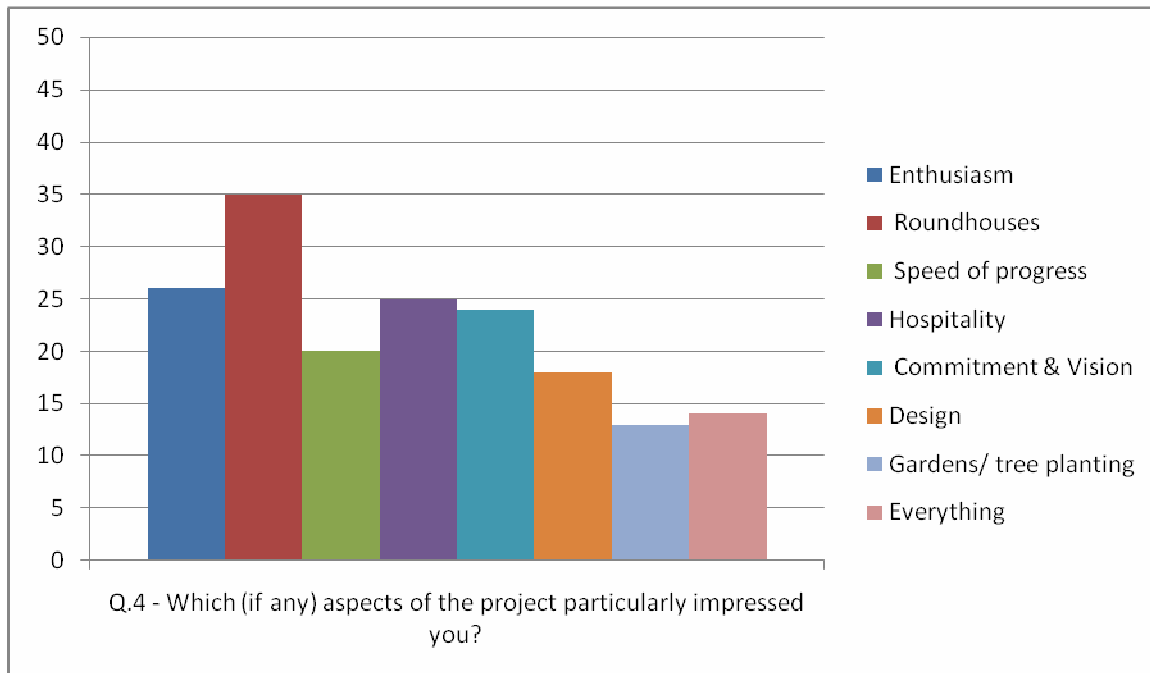


## Lammas Open Days Feedback forms 2010





## Lammas Open Days Feedback forms 2010

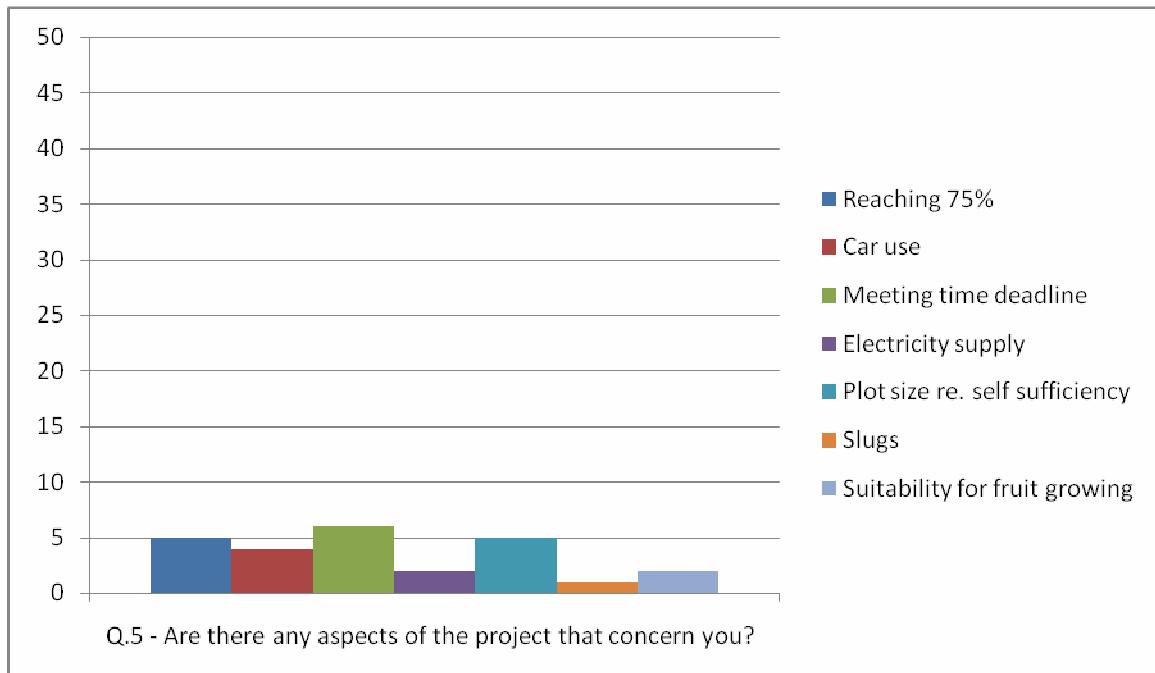


### Quotes:

- Beautiful atmosphere, well thought out
- Work impressive, people inspiring
- Flowing designs of dwellings and gardens
- Energetic commitment to sustainable principles
- The vision, serendipity and courage to get this far
- Fantastic openness and communication in sharing knowledge
- Business projects to generate income
- Very well organised, well set out, fantastic site, great ideas
- The 'can do' attitude and the willingness to admit residents are novices & make mistakes
- How much achieved in short time
- Good to see years of planning being pioneered
- Freedom for each plot holder to do what they want (within leasehold agreement). Really solid, not whacky, which inspires others



## Lammas Open Days Feedback forms 2010

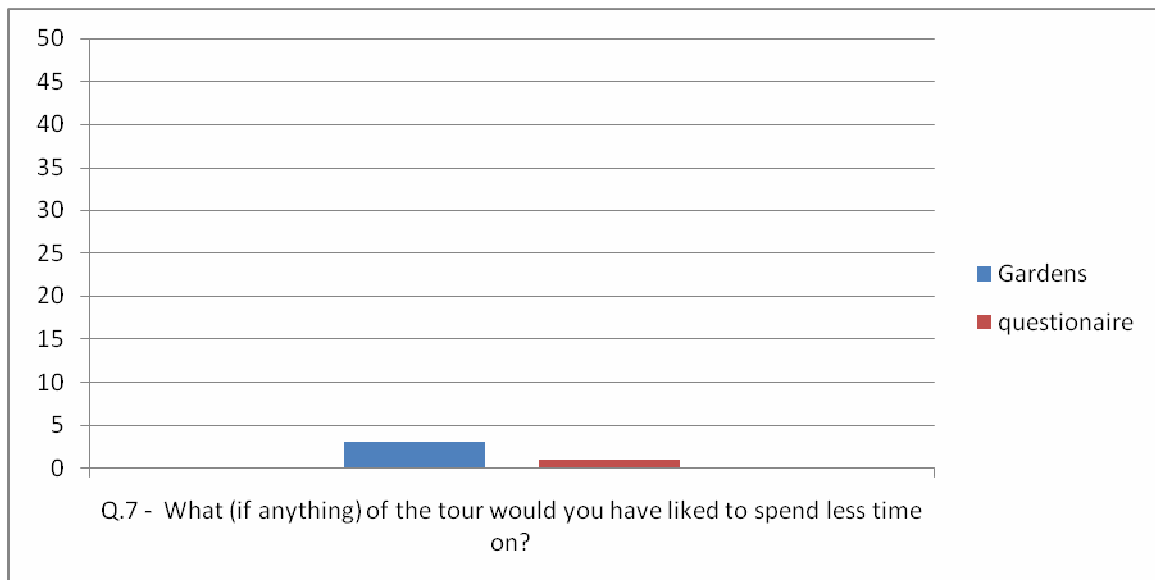
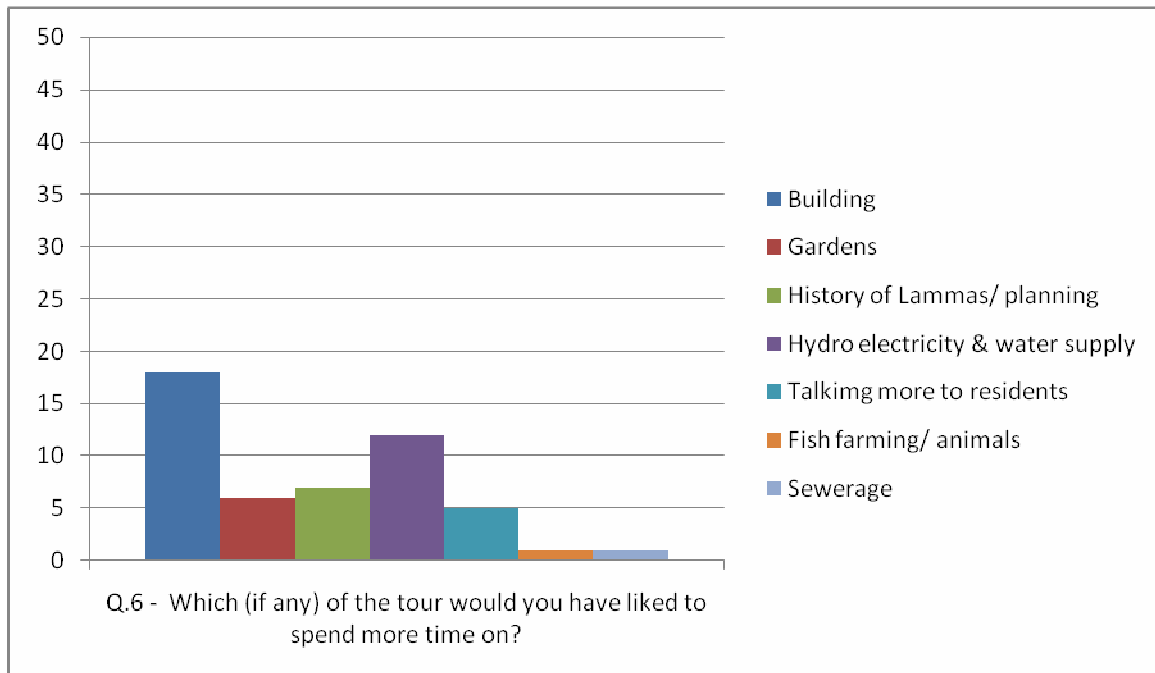


### Quotes:

- A lot to do in 5 years
- Reliance on cars
- Windy site, shelter belts going up – beware of turbulence
- Public misunderstanding of project
- How challenging will it be to replicate?
- Difficult to generate target income in early years



## Lammas Open Days Feedback forms 2010

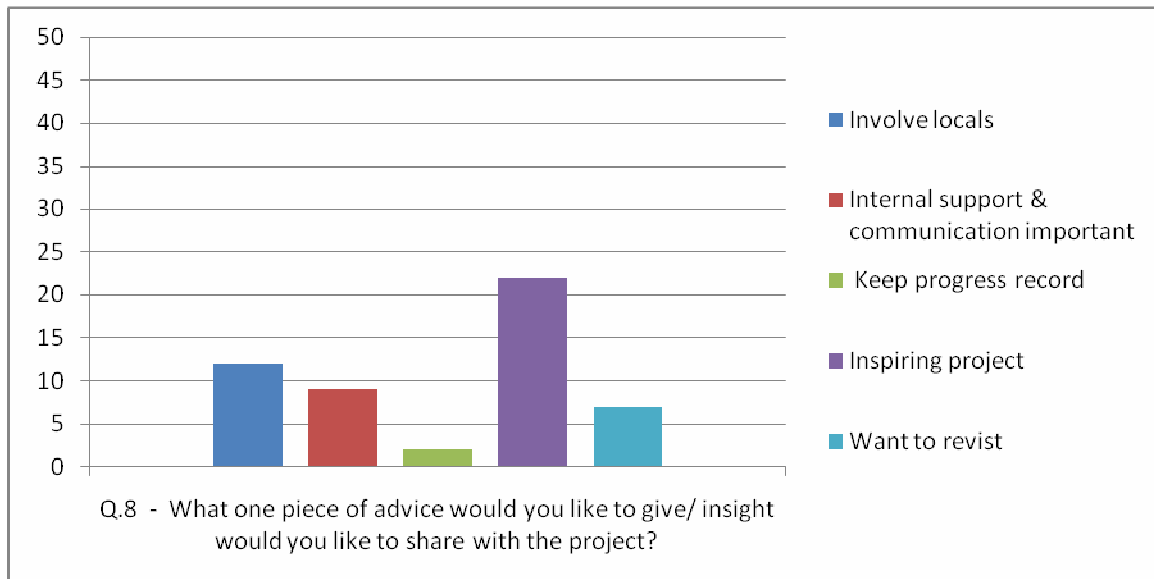


### Quotes:

- Tour just right and very informative
- Want to come back & see how progresses
- I could spend a day at each place



## Lammas Open Days Feedback forms 2010



### Quotes:

- Enjoyed, good luck for future developments
- Keep up local information flow
- Want home education group to visit
- Ambitious fruit production – high and wet location
- More Open Days in different seasons
- Keep putting positive energy into project, brilliant to create something so special
- Mention steep steps at beginning of tour in case of mobility problems
- Take your time, don't rush into projects
- Health care of residents important, incorporate 'healing space' in hub
- Spread message wide. Consider how element of your experience can be taken up by others
- Start to promote your produce now, brand it
- Electronic database/blog to put up ads, announcements, connections
- Thank you for the gift you have given Pembrokeshire